

First Ward Elementary School Demolition
Mecklenburg County, North Carolina
MBA&J No.: 1001/B-8.2
Contract Document Date: October 30, 2011

Addendum Date: November 16, 2011
Issue to: All registered planholders

1.0 NOTICE TO BIDDER:

- A. This addendum is issued pursuant to Article I.I.I of the General Conditions of the Contract for Construction (AIA Document A201) and is hereby made part of the Contract Documents. The addendum serves to clarify, revise, and supersede information in the Project Manual, the Drawings, and previously issued Addenda. It should be bound into the Project Manual in order following the Supplementary Conditions.
- B. The Bidder shall acknowledge receipt of this Addendum in the appropriate space on the Bid Form.

2.0 CHANGES TO PREVIOUS ADDENDA

- A. N/A

3.0 CLARIFICATIONS

- A. Attached is the pre-bid meeting agenda that was distributed during the meeting on November 10, 2011.
- B. Attached is the pre-bid meeting sign-in sheet.
- C. There will be work under other contracts issued by CMS. The Contractor will be responsible for the coordination of these separate contracts. They include: abatement, additional landscaping and playground equipment. The Contractor is responsible for all work indicated in the bid documents unless otherwise indicated.
- D. Seeding and strawing of all disturbed areas of the site is required.
- E. The Contractor is responsible for 1 year of maintenance of the landscaping indicated on the bid documents.
- F. The Contractor is responsible for the work indicated on the erosion control permit.
- G. Temporary water will be available during construction.
- H. Prime bidders must have a General Contractor's license.
- I. Affidavit A must be submitted with the Contractor's bid. Please contact Robin Slade at CMS with any questions.
- J. The Electrical Engineer is Matthew Knotts at MSWG.
- K. The new First Ward Elementary School, Building D and Building E will be occupied during construction.
- L. The proposed year-round school calendar was not approved by the CMS School Board.
- M. CMS will remove all furnishings and complete salvage operations prior to issuing Notice to Proceed.
- N. The bell schedule for First Ward Elementary School is as follows: Start: 9:15 am; End: 4:15 pm.
- O. Construction fencing along 10th Street is to be the panel type to allow easy movement during demolition and construction activities.
- P. 10th Street must remain open in its entirety during the calendar year to allow current use as bus parking lot.
- Q. The public sidewalks along North Caldwell Street and North Brevard Street must remain open during construction.
- R. Please note that CMS has revised the A201 – General Conditions of the Contract for Construction.
- S. The existing Old First Ward Elementary School to be demolished is approximately 47,000 square feet. The building footprint is approximately 34,000 square feet.
- T. The "Substantial Completion" milestone remains July 6th, 2012.

4.0 BIDDING REQUIREMENTS AND CONTRACTING REQUIREMENTS

A. SPECIFICATIONS

- 1. Document 00 10 00 – Table of Contents. Under the heading "Division 11 – Equipment" add "Section 11 68 23 – Exterior Court Athletic Equipment".

5.0 CONTRACTING REQUIREMENTS

- A. SPECIFICATIONS – NA

6.0 DIVISION 1 GENERAL REQUIREMENTS - NA

7.0 SITE WORK

A. SPECIFICATIONS

- 1. Section 32 93 00 - plants
 - a. Part 1, Paragraph 1.7.A.1. Delete Paragraph 1.7.A.1 and replace as follows: "1. Maintenance Period: 12 months from Substantial Completion."

B. DRAWINGS

- 1. Sheet C3: Install curb & gutter along North Brevard St. where plan note references "existing driveway to be closed".
- 2. Sheet C3: The existing curb & gutter along the east side of 10th St. is to remain.

3. Sheet C6: All storm drainage associated with the existing building to be demolished shall be cut off, plugged and abandoned at the right of way.
4. Sheet C6: All sanitary sewer associated with the existing building to be demolished will be dismantled by Charlotte Mecklenburg Utilities at the right of way. The Contractor shall notify the City as part of the demolition process.
5. Sheet C10: Concrete Dumpster Pad Cross Section: Change the concrete thickness from 7" to 8".

8.0 GENERAL BUILDING WORK

A. SPECIFICATIONS

1. Section 11 68 23 – Exterior Court Athletic Equipment
 - a. Add new Section 11 68 23 in its entirety.

B. DRAWINGS

1. Sheet A0000: Curb & gutter in the parking lot to the east of Building E and the west side of 10th St. is to be removed.
2. Sheet A0200: Details F5 and F8: Change wood door dimensions to 5' x 8'.
3. Sheet A0200: Detail C8: Disregard the Finish Schedule note to paint the CMU. CMU is to be unfinished.

9.0 PLUMBING, HVAC, AND FIRE PROTECTION WORK – NA

10.0 ELECTRICAL WORK

A. SPECIFICATIONS

1. NA

B. DRAWINGS

1. Sheet E0100: See attached Bulletin Drawings EBD-1, EBD-2, EBD-3 and EBD-4 dated November 16, 2011.

END OF ADDENDUM NUMBER 1

Old First Ward School Demolition & Bus Lot

PRE-BID MEETING AGENDA

November 10, 2011; 3:00pm

INTRODUCTION OF TEAM MEMBERS AND ROLES

- Owner/Program Manager – Charlotte-Mecklenburg Schools – Capital Program Services
 - Project Manager: Chip Lofton
 - Quality Manager: Randy Deal
 - Project Controls Representative: Kenneth Brown
 - Project Assistant: Mende Smith
 - MWSBE Coordinator: Robin Slade
- Architect – MBAJ Architects
 - Architect's Construction Administrator: Rob Buckanavage
 - MEP Engineers: MSWG Engineers – Dustin Carter
 - Civil Engineer: Donna Barbour
- Attendance sign-in sheet

BIDDING INFORMATION

- Date: Tuesday, November 22, 2011
- Time: 10:00am
- Bid Opening Location: CMS Auxiliary Services Department, 3301 Stafford Drive, Charlotte, NC 28208 in Conference Room #2.
- Type of Bid: Formal
- Printer: Sharpe
- Contract Document Review Locations: AGC Plan Room, McGraw-Hill Dodge, Metrolina Minority Contractors Association, and CMS MWSBE Administration Office.
- Review bid form, subcontractors to be identified
- Review pre-bid substitution requirements
- Bonding Requirements: 5% bid bond, payment & performance bonds
- Bidder Qualifications (section 004513) to be submitted with bid
- General Building Permit paid for by CMS. Trade permits paid for by trades.
- Contractors to acknowledge all addenda received on the bid form

ADDENDA

- Discuss addenda process
- Acknowledge on bid form

M/WSBE PROGRAM

- Program Goals: Overall 21% - 10% Minority, 6% Women, 5% Small Business
- Forms: Affidavit A and B, Good Faith Efforts
- MWSBE Forms to be submitted with bid

REVIEW PROJECT

- Scope of work
- Phasing
- Alternates
- Allowances
- Unit Prices

SCHEDULE

- Review preliminary schedule
- Notice to Proceed.
- Substantial Completion
- Milestones
- Review working hours

ADDITIONAL INFORMATION (AS APPLICABLE)

- NCDENR requirements

QUESTION AND ANSWER

- Project Manager and Architect will answer question and offer clarifications. Responses will be issued in the next addenda.

FIRST WARD SIGN-IN

11.10.11

NAME	COMPANY	PH #	EMAIL
Dominick Pedulla	Pedulla Ex. & Painting	704-663-0017	dominickpedullaexec@att.net
Chad Drake	DH Griffin Wrecking	704-331-9400	cdrake@dhgriffin.com
Brock Walker	" " "	336-389-5399	bwalker@dhgriffin.com
CHRIS WEIZANT	" " "	704-331-9400	cweizant@dhgriffin.com
Jim (DAN) Ayrer Blanton	Ayrer Blanton	704-939-1038	JAMES@ayrerblanton.com
Gerald Anderson	Bobby's Painting Co.	704-3945124	Bobbyspaint@bellsouth.net
Aaron Lindsay	CCI	910-301-9379	aaron.lindsay@cci-env.com
MILK Farrow	Farrow Group	313-259-7910	MFARROW330@Comcast.net
Jeely Humphey	FARROW GROUP	313-259-7910	
KRIS Zell	Clear Site Industrial	704-631-9993	kzell@clearsiteindustrial.com
Joe Schold	ATC Associates	704-236-1259	joeschold@ATC Associates.com
Eric Small	Blythe Development Co.	704-588-0023	esmall@blythedevelopment.com
Tom Roe	NCM Demolition	704-333-0231	tror@ncmgap.com
Stephanie Keegley	EHG	704-527-2018	stkeegley@EHG LLC.com
AVA Maachem	Total Cleaning	704-293-0583	crowncity.team@gmail.com
JACK WATTS	WED Corporation	803-518-9537	JWTW@wedcorporation.com
James Warehead	Brad Cole const.		
	Complete Demolition	770-757-7149	james.cdse@att.net
Ned Zeitouni	Sorensen Gross Inc	704-333-2330	nedsorensengross.com
BEN GARDNER	DIVERSIFIED ENT	704-618-0362	
PETER AWUTE	CONMGT CONST.	704-713-3685	awutepe@yahoo.com
Pedrian Tribble	Levcon material supply	704-756-4115	ptribble@levconlogistics.com
Robin Slade	CMS	980-343-8000	robin.slade@cms.com
RAYMOND BROWN	Doit All Interiors	704-492-9747	robin.slade@cms.com
	Doit All Interiors		DoitAllInteriors@Yahoo.com
JARROJ TEPIN	ARC Demo	704-730-0701	oacdemo@yahoo.com
Mark Paramore	Star Const. Svc.	704-482-1582	paramoia@msn.com
Van Holden	HBC		vanholden@hbc.com
Van Holden	HBC	704-507-5242	vholden@holdenbuilding.com

PART 1 - GENERAL

1.1 RELATED DOCUMENTS

- A. Drawings and general provisions of the Contract, including General and Supplementary Conditions and Division 01 Specification Sections, apply to this Section.

1.2 SUMMARY

- A. Section Includes:
 - 1. Exterior basketball units.

1.3 ACTION SUBMITTALS

- A. Product Data: For each type of product and accessory indicated.
- B. Shop Drawings: For exterior court athletic equipment. Include the following:
 - 1. Location of exterior court athletic equipment.
 - 2. Anchorage details.

1.4 INFORMATIONAL SUBMITTALS

- A. Maintenance Data: For exterior court athletic equipment to include in maintenance manuals.

1.5 QUALITY ASSURANCE

- A. General: Provide equipment complying with NFHS requirements.

PART 2 - PRODUCTS

2.1 MANUFACTURERS

- A. Manufacturers: Subject to requirements, provide products of one of the following manufacturers:
 - 1. ABT SportsEdge, Troutman, NC, (800)334-6057.
 - 2. Aluminum Athletic Equipment Co., (800)523-5471.
 - 3. L.A. Steelcraft, (626)798-7401.
 - 4. Patterson Williams Athletic Manufacturing Co., (800)459-7241.
 - 5. UCS Inc. (800)526-4856.

2.2 EXTERIOR COURT ATHLETIC EQUIPMENT

- A. Basketball Units: Galvanized steel post, minimum 5 inch diameter, with 6 foot extension, direct mount, with manufacturer's standard pole padding, with 42 by 72 inch rectangular steel backboard, powdercoated white, and abuse-resistant playground goal: SportsEdge, SE656-RS-UG.

PART 3 - EXECUTION

3.1 EXAMINATION

- A. Examine substrates, areas, and conditions, with Installer present, for compliance with requirements for play court layout, alignment of mounting substrates, installation tolerances, operational clearances, and other conditions affecting performance.
 - 1. Verify critical dimensions.
 - 2. Proceed with installation only after unsatisfactory conditions have been corrected.

3.2 INSTALLATION, GENERAL

- A. General: Comply with manufacturer's written installation instructions and competition rules indicated for each type of exterior court athletic equipment. Complete equipment field assembly, where required.
- B. Unless otherwise indicated, install exterior court athletic equipment after other finishing operations, including play surfacing, have been completed.

- C. Permanently Placed Exterior Court Athletic Equipment: Rigid, level, plumb, square, and true; anchored securely to substrate; positioned at locations and elevations indicated on Shop Drawings; in proper relation to adjacent construction; and aligned with court layout.
 - 1. Sleeve Location: Coordinate location with application of game lines and markers.
 - 2. Sleeve Elevation: Coordinate installed heights of sleeve with installation and finishing of playing surface.
- D. Sleeve Setting: Position sleeve in oversized, recessed voids in concrete slabs and footings. Clean voids of debris. Fill void around sleeves with grout, mixed and placed to comply with grout manufacturer's written instructions. Verify that sleeves are set plumb, aligned, and at correct height and spacing; hold in position during placement and finishing operations until grout is sufficiently cured. Set insert so top surface of completed unit is flush with finished playing surface.

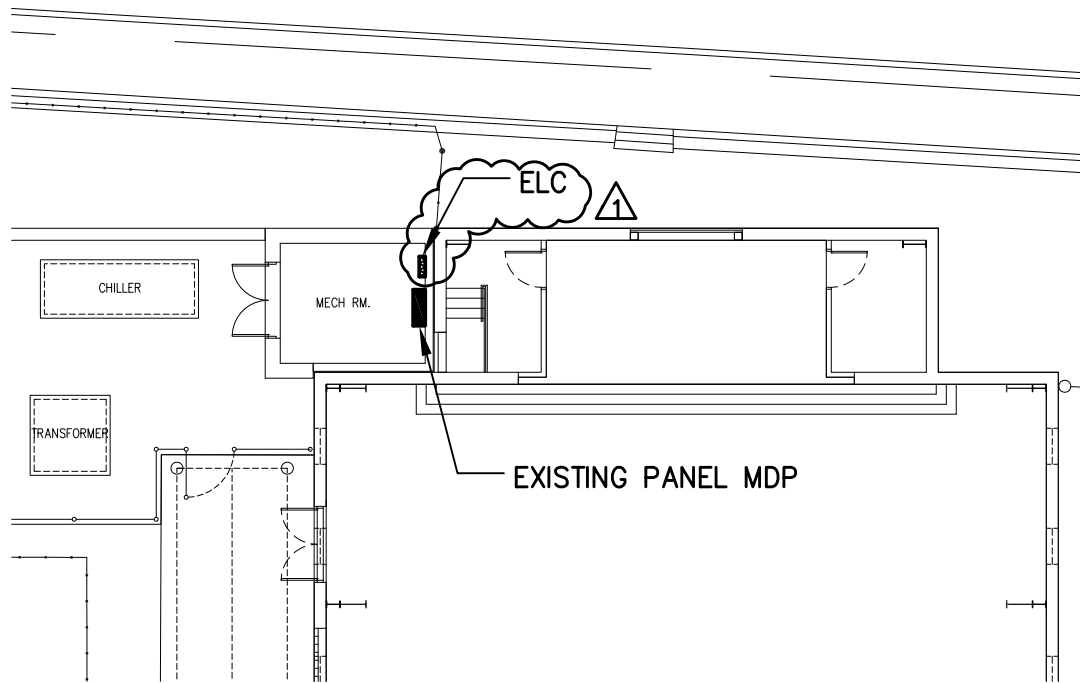
3.3 ADJUSTING

- A. Adjust movable components of exterior court athletic equipment to operate safely, smoothly, easily, and quietly, free from binding, warp, distortion, nonalignment, misplacement, disruption, or malfunction, throughout entire operational range. Lubricate hardware and moving parts.

3.4 CLEANING

- A. After completing exterior court athletic equipment installation, inspect components. Remove spots, dirt, and debris and touch up damaged shop-applied finishes according to manufacturer's written instructions.
- B. Replace exterior court athletic equipment that cannot be cleaned and repaired, in a manner approved by Architect, before time of Substantial Completion.

END OF SECTION 11 68 23



E1

ELECTRICAL SITE PLAN

1/16" = 1'-0"

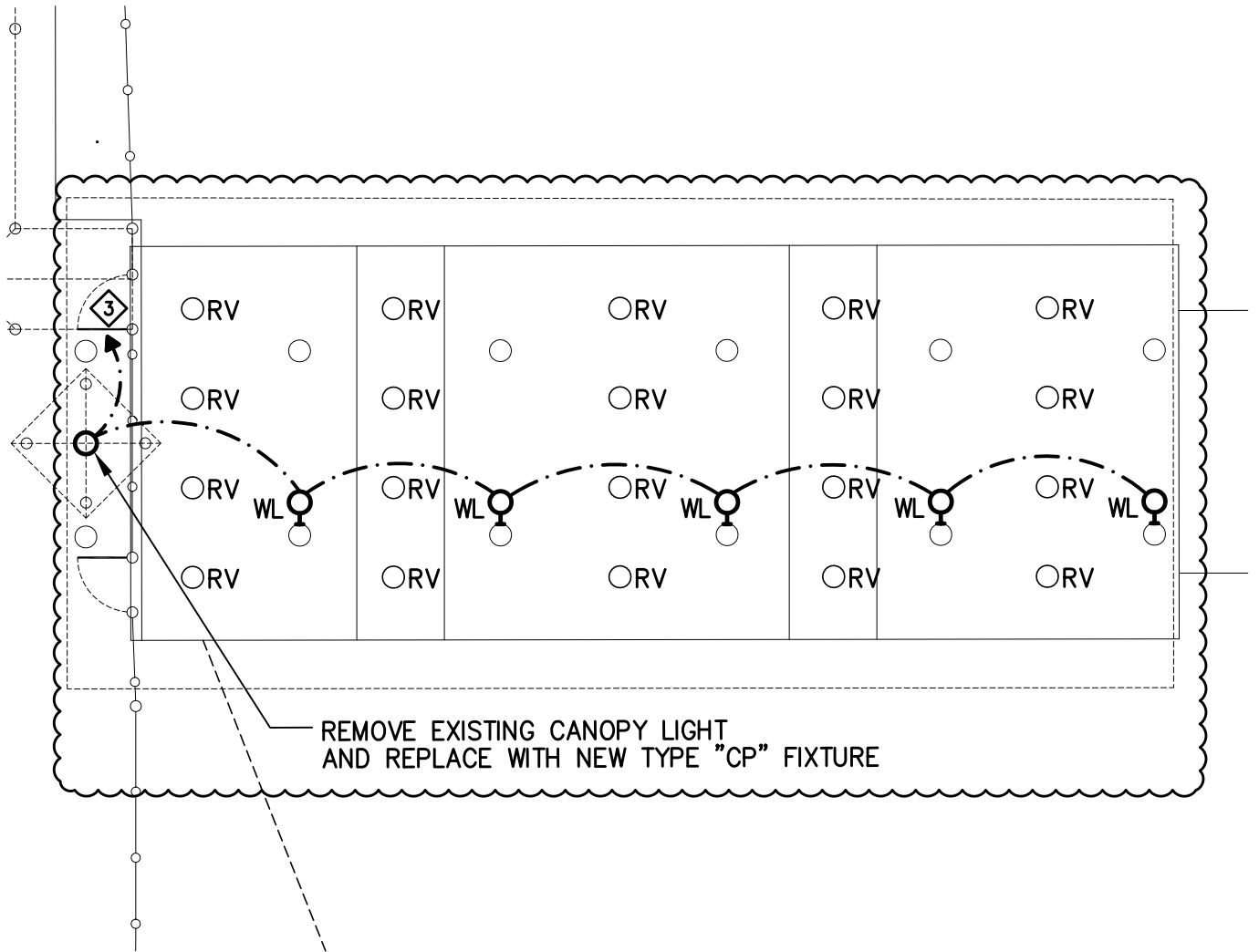
NOTES:

- 1 CONNECT TO SPARE 20/1 CIRCUIT BREAKER IN EXISTING PANEL MDP (480Y/277V, 500A MCB, CONNECTED LOAD 304.5A) WITH 2#10, 1#10G, 1"C. ROUTE ALONG BREVARD STREET AND INTO MECHANICAL ROOM ON NORTH SIDE OF BUILDING "E" ▲
- 2 REMOVE EXISTING COMMUNICATIONS WIRING BETWEEN OLD AND NEW FIRST WARD ELEMENTARY SCHOOLS. REMOVE ALL COMMUNICATIONS WIRING ON WALLS AND ROOF OF NEW FIRST WARD ES. OWNER WILL DISCONNECT COMMUNICATIONS WIRING INSIDE NEW FIRST WARD SCHOOL. PATCH ROOF AS REQUIRED.
- 3 CONNECT TO SPARE 20/1 CIRCUIT BREAKER IN EXISTING PANEL MDP (480Y/277V, 500A MCB, CONNECTED LOAD 304.5A) WITH 2#12, 1#12G, 1/2"C. ROUTE THROUGH NEW LIGHTING CONTACTOR ELC. ROUTE CONDUIT ALONG HIGH CANOPY AND THE DOWN TO LOWER CANOPY. ROUTE CONDUIT TIGHT TO STRUCTURE ALONG LOW CANOPY AND INTO SOUTH WALL OF BUILDING "E". FROM INSIDE BUILDING E, ROUTE CONDUIT AS HIGH AS POSSIBLE TO PANEL MDP.
- 4 NOT USED.

▲
McKNIGHT • SMITH • WARD • GRIFFIN
 ENGINEERS, INCORPORATED
 PO Box 240826 • 4223 South Boulevard
 Charlotte, NC 28224 • 704/527-2112



Project: FIRST WARD ELEMENTARY SCHOOL DEMOLITION		Drawing Ref.: E0100	Bulletin No.: EBD-1
MBA+J Comm. No. 1001	Date: 11-16-11		



E1

ELECTRICAL SITE PLAN

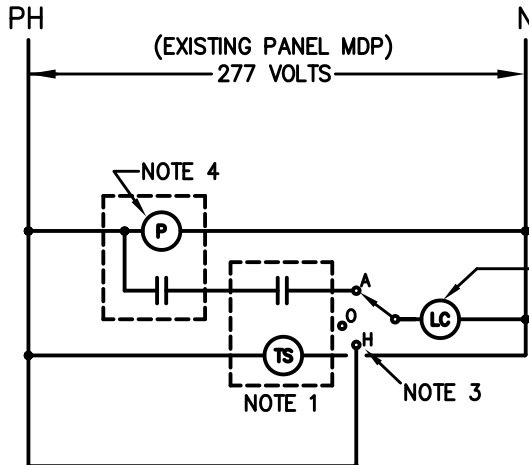
1/16" = 1'-0"

McKNIGHT • SMITH • WARD • GRIFFIN
ENGINEERS, INCORPORATED
PO Box 240826 • 4223 South Boulevard
Charlotte, NC 28224 • 704/527-2112



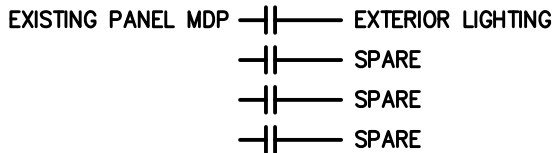
MBAJ
architecture

Project: FIRST WARD ELEMENTARY SCHOOL DEMOLITION		Drawing Ref: E0100	Bulletin No.: EBD-2
MBA+J Comm. No. 1001	Date: 11-16-11		



NOTES:

1. DIGITAL TIME SWITCH RATED 20A INDUCTIVE WITH SPST CONTACTS, TIMING MOTOR, RESERVE POWER SPRING MECHANISM, 7 DAY DIAL AND INDOOR ENCLOSURE. REFER TO SPECIFICATIONS FOR ADDITIONAL INFORMATION.
2. ELECTRICALLY HELD LIGHTING CONTACTOR WITH 20A BALLAST RATED CONTACTS. CONTACTOR SHALL BE OPEN TYPE. REFER TO SPECIFICATIONS FOR ADDITIONAL INFORMATION.
3. HAND-OFF-AUTOMATIC SELECTOR SWITCH. SWITCH SHALL BE HEAVY-DUTY, OIL TIGHT, MAINTAINED CONTACT TYPE. REFER TO SPECIFICATIONS FOR ADDITIONAL INFORMATION.
4. PHOTOCELL CONTROL DEVICE. REFER TO SPECIFICATIONS FOR ADDITIONAL INFORMATION.
5. MOUNT TIME SWITCH AND CONTACTOR IN 18"x 18"x 6" DEEP NEMA 1 ENCLOSURE WITH HINGED DOOR. MOUNT SELECTOR SWITCH ON DOOR. PROVIDE PERMANENT NAMEPLATE ON DOOR TO READ: "EXTERIOR LIGHTING CONTROL".



2
EXTERIOR LIGHTING CONTROL DIAGRAM
E0100 NO SCALE






McKNIGHT • SMITH • WARD • GRIFFIN
 ENGINEERS, INCORPORATED
 PO Box 240826 • 4223 South Boulevard
 Charlotte, NC 28224 • 704/527-2112



Project:	FIRST WARD ELEMENTARY SCHOOL DEMOLITION	Drawing Ref.:	Bulletin No.:
MBA+J Comm. No.	1001	Date:	E0100
	11-16-11	EBD-3	

LIGHTING FIXTURE SCHEDULE

TYPE	DESCRIPTION	VOLT.	LAMPS						BALLASTS		WATTS	MOUNTING	MANUF. CATALOG NO.	
			QTY	TYPE	BULB	BASE	TEMP	CRI	LUMENS	QTY				TYPE
SP1	H.I.D. RECTILINEAR AREA LIGHT, ALUMINUM HOUSING ALUMINUM REFLECTOR, TYPE IV DISTRIBUTION WITH HOUSE SIDE SHIELD, ALUMINUM DOOR, FLAT LENS, FULL-CUTOFF. PROVIDE 9" SQUARE POLE ARM AND ALL NECESSARY MOUNTING HARDWARE. 20' ROUND TAPERED CLEAR ANODIZED ALUMINUM POLE. POLE SHALL BE RATED FOR 90 MPH WINDS WITH 30% GUST FACTOR FOR LUMINAIRE PROVIDED. NATURAL ALUMINUM ANODIZED FINISH. PROVIDE WITH INTEGRAL PHOTOCELL. 	277	1	400MH CLEAR	ED-28	MOG	4000 K	65	32000	1	M-59 HPF	458 	POLE, ARM	LITHONIA #KSF LUMARK #HR DAYBRITE #SBX
CP	6"X9" RECTANGULAR VANDAL RESISTANT FIXTURE, CLEAR PRISMATIC POLYCARBONATE LENS, DIE-CAST ALUMINUM HOUSING, DARK BRONZE FINISH, WET LOCATION. 	277	1	32W TRIPLE	T4	4-PIN	3500 K	82	2400	1	ELECTRONIC HPF, PS SERIES	35	CANOPY, SURFACE	LITHONIA #VRIC LUMARK #VR SERIES LUMINAIRE #LP 58 A/B SERIES
WL	EXTERIOR WALL MOUNTED HID FIXTURE, DIE-CAST ALUMINUM HOUSING, BOROSILICATE GLASS LENS, FULLY GASKETED, UL WET LOCATION LABEL, DARK BRONZE FINISH, MOUNTING HEIGHT AS DIRECTED BY ARCHITECT/ENGINEER OR AS INDICATED ON THE DRAWINGS.	277	1	100MH CLEAR	BD17	MED	3200 K	70	9000	1	HX, HPF	130	WALL, SURFACE 12' AFF	LITHONIA #TWH LUMARK #GS DAYBRITE #MLM

McKNIGHT • SMITH • WARD • GRIFFIN
ENGINEERS, INCORPORATED
PO Box 240826 • 4223 South Boulevard
Charlotte, NC 28224 • 704/527-2112



Project: FIRST WARD ELEMENTARY SCHOOL DEMOLITION		Drawing Ref.: E0100	Bulletin No.: EBD-4
MBA+J Comm. No. 1001	Date: 11-16-11		